



# Running Postman



AUSTRALIAN PLANTS SOCIETY – MELTON & BACCHUS MARSH INC

## AUGUST MEETING

Overview by Cathy Powers

With amazing photographs and an interesting story, Rudie Kuitert introduced us to a world seldom seen. There is no doubt that a passion for photographing the tiny, fast moving and amorous orchid pollinators has provided Rudie with diverse opportunities and big challenges. Imagine sitting in 40 degree heat waiting for a wasp to arrive, seeing it land on the orchid and then missing the photo shot. That is my experience but Rudie has accumulated a large number of images by learning about the insects' habits, the orchids' type of pollinator attraction technique and being in the

right place at the right time. What does this provide? There is now proof that some orchids have more than one insect species within a genus as a pollinator; some orchid genus, depending on the species, will have very different pollinators varying from ants to tiny wasps or flies; some insects are very sensitive to movement and can be extremely

difficult to photograph with pollen on its body. Knowing that some of the pollinators are as small as 2mm does not give me much hope but I will be taking lots of pictures of those moving yellow bits just in case.

*Thanks, Rudie, it was amazing.*



Photos by Cathy Powers & Rudie Kuitert

**Points to remember: Investigate your subject to know what to expect and have patience. Timing is everything. Take lots of photos, you never know what they might contain.**

## CALENDAR EVENTS

2013

25<sup>th</sup> September

**REMINDER** for all members: Our venue for this meeting is the Darley Neighborhood House (33 Jonathan Drive, Darley) for a 7 – 9pm plant exposé. Please bring plants for our presentation and discussion.



23<sup>rd</sup> October

Meeting: See details page 4  
**NOTE VENUE CHANGE.**

## MARCH POTS

By now members should be putting together their pot plant for the March 2014 meeting. Refer to July 2013 newsletter. To enhance your success in growing plants in containers, here are a few hints.

**Containers:** These can be made of almost anything but big enough to support plants when they are fully grown, have holes in the bottom for adequate drainage and at least 200mm deep for adequate root development.

**Soil Mix:** The ideal container medium must be lightweight, porous to drain well but high enough in organic matter to hold water because roots require both air and water. Soil straight from the garden cannot be used successfully because it will not drain enough resulting in too little air for the roots as well as shrinking away from the sides of the pot when dry.

**Watering:** Pay particular attention to watering because the volumes of soil are relatively small and containers dry out very quickly. Incorporate coir peat or soil wetting compounds to assist moisture retention. To reduce evaporation, mulch pots with organic matter such as leaves or wood chips or alternatively cover the surface with stones and pebbles.

**Fertilizer:** Add slow release fertilizer to the soil mix (unless already incorporated by the manufacturer).

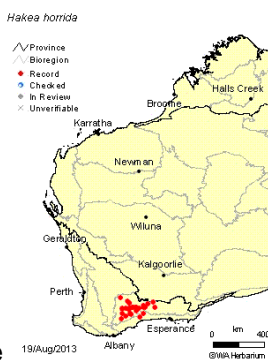
## NOMENCLATURE

The dictionary says this means a set or system of names or terms, especially those used in a particular science or art (botany would be one of those).

*What's in a name?*

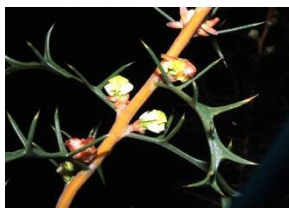
### **Hakea horrida**

Occurs in drier areas of south-western Western Australia from north-east of Kondinin to Frank Hann National Park and south to near Jerramungup and



### Ravensthorpe

No common name and the plant is described as a dense or spreading shrub up to 2.5m tall. The species name is from *horridus*, Latin for dreadful, a reference to the difficulty in handling this species because of its exceedingly prickly



leaves.



## BATHERS & DINERS



Diamond Firetail Finch

Ground-feeders that predominantly eat ripe and half-ripe seeds of various grasses.



Nymph of the Gumleaf Grasshopper

The adult is brown in colour and camouflages as a dry gum leaf. They usually rest on ground among dry fallen leaves during the day; move up and feed on green leaves during the night.



Scarlet Robin

Perches on fence-posts or branches from where they pounce on small insects and other invertebrates which are taken from the ground as food.

## AWARD



*Marilyn training a talented student???*

A local identity has been awarded the prestigious Australian Natural History Medallion 2013.

### And the winner is MARILYN HEWISH!!

Nominations – Eligibility:

Any person shall be eligible for the Award who within the period of ten years immediately preceding last nomination has increased popular and/or scientific knowledge of Australian natural history (biological or physical). Such a person may have:

1. assisted notably in the protection and understanding of Australian native flora and/or fauna;
2. discovered and and/or described new Australian species of plants or animals; devoted considerable time and care to the study of any branch of Australian natural history, including palaeontology and geology, and the dissemination of knowledge through the publication of articles or books or by photography or pictorial art or any other means accepted by the Award Committee.

CONGRATULATIONS – MARILYN!

## ANNUAL GENERAL MEETING

### Report and Outcomes

At the recent AGM, our group adopted the model rules and the appropriate paperwork has been forwarded to Consumer Affairs Victoria (we await confirmation that all has been completed correctly).

We also had elections for management team members that will offer volunteer hours in order to keep the group running over the next 12 months. It was very disappointing that for a group named APS Melton & Bacchus Marsh, not one member from either area accepted a nomination to hold a position on the committee. Please note: the committee members are listed on page 6 of this newsletter and the contact details of the secretary. The new committee will have its first meeting before the end of September to plan the next year's events so if you have any ideas to contribute, please contact any member of the committee.



With all the activity on the evening, there were two omissions and I will

try to rectify those now. **FIRST: Barb Pye** did not stand for any position this year after serving terms as Vice President and President for many years. We owe her a debt of gratitude

for all she has contributed to our group through her leadership and willingness to share her knowledge. If we did not know what plant we were presenting, Barb was always there to help. She, along with David, has been a stalwart of APS Melton & Bacchus Marsh. So when next you catch up with her – say **THANK YOU**. I know I will.

The second thing is that we welcome a new member – Lynne Richards. We forgot to introduce her to the members and she was so quick away I did not get a chance to take a photo. At our next meeting, please make her feel welcome and let her know how pleased we are to have her involved with our group.

It will be good to have our meeting greeter back after an extended time away in the warmer climates.

Over the next few months we will need to review and update our bylaws. If there is any member who is interested in helping with this, please make contact with Cathy Powers



SPRING IS IN THE AIR

FABACEAE



SWAN RIVER PEA (*Gastrolobium celsianum*) – My Garden



COMMON HOVEA (*Hovea heterophylla*) – Brisbane Ranges National Park

## October 23rd

Our October meeting is being co-sponsored by the City of Melton.



Our guest speaker will be Owen Gooding from CFA Victoria and his topic will be 'Your Garden & Bushfires'. It does not matter where your garden is located, during our hot, dry summers all gardens can be under threat from bushfires. There will be handouts regarding plants that are resilient to fire, a booklet about landscaping for bushfires and an opportunity to ask questions regarding this topic.

We are asking all members who plan on attending to contact us by email on [aps@hotkey.net.au](mailto:aps@hotkey.net.au) or phone Cathy on 0412 806 368 or 5369 4302 to register your interest. This will make catering and supply material provisions easier. The venue is Melton Community Hall, 232 High Street, Melton – from 7.30pm for an 8pm start. Please show your support for our group by attending.

It would also be good if you could bring along a couple of your plants because we will have a short talk on our member's garden plants.



**September 21 & 22** – Angair Wildflower and Art Show, Anglesea Community Hall, Anglesea



**October 5 & 6** – Australian Plants Society Grampians Group, Pomonal Native Flower Show, Pomonal Hall

**October 6** – Wartook Gardens Open Day, Wartook

**October 13, 2013** – Bookings now open for bus tours. See FoBR website for online booking link <http://www.fobr.org.au>

Anakie Hall, Staughton Vale Rd, Anakie from 9.30am – 4.30pm

### BRISBANE RANGES WILDFLOWER SHOW



**October 19 & 20** – APS Ballarat Native Flower Show & plant sale Robert Clark Horticultural Centre, Ballarat Botanical Gardens (10am)



**OUR WEBSITE:**  
[www.runningpostman.org.au](http://www.runningpostman.org.au)

## NO CHEMICALS

Besides companion planting, there are some relatively harmless ways to get rid of particular pests. Remember: always be careful to target with care.

**Espresso coffee** – caffeine causes snails and slugs to die from heart failure. Mix 1 part strong espresso coffee to 10 parts water, spray immediately on leaves and on the ground around susceptible plants. Repeat weekly and after rain.



**Baking Soda** – natural fungicide that helps prevent blackspot and mildew. Mix 2 tbsp baking soda with 2L warm water, add 2 tsp soap flakes. Remove any dead or affected leaves then spray solution to both sides of remaining foliage to prevent reinfestation.

**Garlic spray** is a general purpose insecticide. Soak 90g chopped garlic in 2 tsp vegetable oil for 48 hours, dissolve 30g grated pure soap (not detergent) in 600ml warm water, add to garlic, & filter well. Dilute using 1 part solution to 99 parts water (store in sealed glass container).

### QUOTE OF THE NEWSLETTER

If you don't make mistakes, you're not working on hard enough problems.

---Frank Wilczek

## Surprises in the Garden

### Why now – why here?

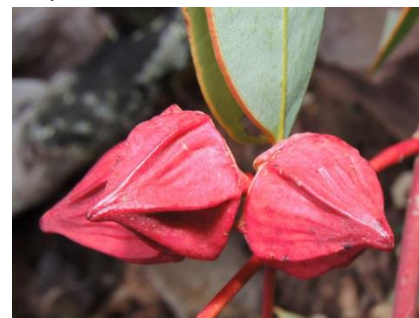
By Cathy Powers

I am always on the lookout for the new plants in our garden. Sometimes I am frustrated because I am not sure what the plant is – friend (native) or foe (weed). This time I was absolutely certain because it was an orchid. Although I have seen one other small caladenia on our property, this is the first one in our fenced area. It is a *Caladenia fuscata* and I know this because of the structure, known as the lateral-lobe front, extends well forward.



We have a little eucalypt that has struggled for so long I can't even remember the name of the plant. This year it had produced some

beautiful buds – and then a huge wind gust broke the top off (including all the buds). Now I may never know what it is.



Nature can be cruel.

## Australian Plants Society – Melton & Bacchus Marsh Inc.

Incorporated in Victoria: A0026204P

ABN: 68 053 689 781

### APS Melton & Bacchus Marsh Committee 2012/13

President	Vacant		
Vice President	Vacant		
Secretary	Cathy Powers	5369 4302	email: apsmeltonbacchus@gmail.com
Treasurer	Norris McCarthy	5428 9320	
Committee:	Graeme Woods, Julianne Diwell, David Pye, Lucille McCarthy Cathy Powers – <b>Newsletter editor</b>		

URL for relevant internet websites:

Website: [www.runningpostman.org.au](http://www.runningpostman.org.au)

APS Victoria website : <http://www.apsvic.org.au/>

ANPSA website: <http://anpsa.org.au>

All contributions to the newsletter are gratefully received. Please send a word document and photos to the group's Gmail address. If you have any questions, feel free to contact me by email, snail mail or phone.

#### Postal Address:

**P.O. Box 946**

**Bacchus Marsh, Victoria 3340**

**MEETINGS:** 4<sup>th</sup> Wednesday of the month except July and December (doors open at 7.30pm)

VENUE: Dunvegan Cottage, Willows Historic Park

Cnr Reserve Rd & Nixon St, **Melton Melways: 337 C9**