



Running Postman



AUSTRALIAN PLANTS SOCIETY – MELTON & BACCHUS MARSH INC

FEBRUARY MEETING

Overview by Cathy Powers

There are a number of interesting facts regarding grasslands. Less than 8% of all grasslands worldwide are protected. The lowest protection of any biome on earth is the temperate grasslands at less than 1%. Considering that about 1/4 of the earth's land area is occupied by grasslands, the protection statistics emphasizes why it is such a threatened and vulnerable part of nature. Grasslands are considered the transitional biome. This means that they are usually found between desert and the bush (or forested areas). During the presentation, descriptions and examples were given of 'Grassy Woodlands', 'High-quality



Grassland Plants



Nature's beauty

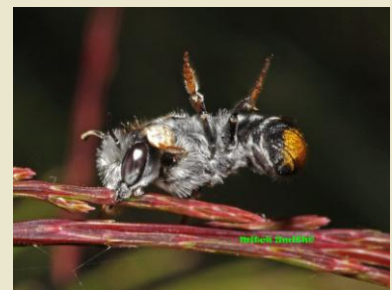
Grasslands' and 'Poorer Quality Grasslands'. Frances gave us an overview of the Pinkerton Landcare & Environment Group. It was easy to see her passion for the Mulla Mulla Grasslands and the Melton community has certainly benefited. A short explanation was offered regarding the best practice for ensuring that the areas in conservation facilitated the biodiversity so critical for all the grassland inhabitants This includes the briophytes (mosses, lichens, etc), plants, animals, insects and even humans. Thanks, Frances, for your input on the night.

Points to remember: No matter what the title (prairie, savanna, grassland, etc.), the one common feature is that grass is the naturally dominant vegetation.

CALENDAR EVENTS

2014 23rd April, 2014

Our guest speaker will be Ken Walker. Ken is the Senior Curator (Entomology) at Museum Victoria and his topic will be Australian native bees. You won't look at a bee in the same way, ever again, after hearing his enlightening presentation.



Photos by Mitch Smith

From www.bowerbird.org.au

2014 28th May, 2014

Meeting: See details page 4

FJC ROGERS SEMINAR

NOMENCLATURE

TRY YOUR ID

**YOU WON'T KNOW
UNTIL YOU GO**

"*Brachychiton and Allied Genera*" is the topic of the 2014 FJC Rogers Seminar to be hosted by the Bendigo Native Plant Group Inc. You will find the expression of interest form attached to this newsletter and contained in this is a brief description of the topic and an open invitation to attend. The dates are 18 & 19 October, 2014 so now is the time to mark your calendar and send in your form to receive further information. Here is a teaser from Mr. Google:

Sterculiaceae (from the genus *Sterculia*, derivation obscure). The *Sterculiaceae*, like the *Malvaceae*, contain abundant mucilage. They also contain a bitter principle which renders them an emetic and a stimulant. The seeds of *Theobroma cacao*, native to central and northern South America, furnish cocoa, chocolate, and cocoa-butter. *Cola acuminata* of Africa furnishes the cola nut, now very popular as an ingredient in a mildly stimulating drink. It is said to form the main constituent of the drink called "coco-cola."



The dictionary says this means a set or system of names or terms, especially those used in a particular science or art (botany would be one of those).

What's in a name?

Dasyogonaceae



World distribution: Only in Australia

According to Wikipedia, this is a family of flowering plants - although not commonly recognized by taxonomists because the plants involved were usually included in the family *Xanthorrhoeaceae*.

The family is endemic to Australia and comprises of 16 species in four genera.



One of my favourite is the *Calectasia cyanea* (Blue Tinsel Lily). Every time I explore the Grampians, I enjoy the challenge of photographing this flowering plant because it is always a difficult to get the colours correct.

PIMELEA . . its diversity:



P. physoides

P. ligustrina sp *ciliata*



P. nivea

P. ferruginea

AND THE WINNER IS!!



Our esteemed leader - Russell.

March Meeting: by Russell Wait

Barb & David Pye spoke on how to grow plants from a cutting with a demonstration. Members then had a go at doing it. It was very good night. After super we counted up the votes for the best pot plant. There were 7 pots with a photo of one that was of a wheel barrow filled with green that the roos had been having a feed of. The first place was a red flowering *Eremophila* "ringens" (manuscript name) that I found in 97 but this gold form *eremophila*, with brighter flowers, was collected in 2004. Around the base of the plant was *Eremophila arguta* with some blue flowers on it. The second place was a large aluminium pot with *Eremophila* "firesprite" and *Ptilotus exaltatus*. There wasn't much difference between 1st and 2nd place and if the 'firesprite' had been flowering it might have won.

POTS OF INTEREST



Thanks, Jean (Partridge) for the photos!

Flat Pot

May 28 meeting

This material can be found on the ANPSA website and was written by Iain Dawson.



Factors that may have contributed to the relative neglect of grafting are:

- the skill level required
- the cost
- time required for production
- problems of re-shooting rootstock
- the lack of good information on suitability of rootstock

Propagation benefits have also been overshadowed by tissue culture, which has been more fashionable in recent years, and smoke stimulated seed germination.

Maja Zweck will be our guest speaker for the May meeting and her expertise with grafting and the resultant high standard (pardon the pun) of Australian native plants as standards is well known.

SUPPORT FOR OUR SPEAKERS

Please be sure to come along to our meetings and support the efforts of your committee to arrange topical speakers but also to demonstrate appreciation for the speaker who will be attending.

CALENDAR OF EVENTS FOR 2014

June - Neil Macumber on 'Tripping in the wilds of WA'

July - NO MEETING.

CONTAINERS 101

✓ Start with a THRILLER

Something with bold foliage growing 45 - 90cm tall.

✓ Add a FILLER

This is the flowering plant which can compliment or contrast the bold foliage.

✓ Finish with a SPILLER

Many prostrate plants can grow to overflow the edges of your pot.

Important Point: Whatever combination of Australian native plants you use, they should have similar water requirements.



ANNUAL PLANT SALE

It will be all hands on deck during our annual plant sale scheduled for the 3rd of May, 2014. Please volunteer to help. We will have lots of Hakeas to talk about to prospective buyers and an hour of your time would be greatly appreciated. If you are available, please advise me at the April meeting or by email (apsmeltonbacchus@gmail.com)



OUR WEBSITE:

www.runningpostman.org.au

HAKEA SPECIES for our May

2014 Plant Sale

H. amplexicaulis; *H. archeoides*
H. bakeriana; *H. bucculenta*
H. cinerea; *H. cristata*
H. cucullata; *H. cygna*
H. dohertyii; *H. enneaba*
H. francisiana Sandstone
H. francisiana ssp. coriacea
H. gilbertii; *H. laurina*
H. lehmanniana; *H. lissocarpa*
H. minyma; *H. multilineata*
H. neurophylla; *H. newbeyana*
H. obtusa; *H. ochroptera*
H. orthorrhynca; *H. pendens*
H. petiolaris; *H. platysperma*
H. pritzellii; *H. purpurea*
H. rugosa; *H. scoparia*
H. smilacifolia; *H. undulata*
H. varia; *H. verrucosa*
H. victoria



35 species and like one company's advertisement says:

There may be lots of some and few of others.

QUOTE OF THE NEWSLETTER

Remember, every time you open your mouth to talk, your mind walks out and parades up and down the words.

--- Edwin H. Stuart

Surprises in the Garden

MIFGS Hanging Baskets

By Cathy Powers

Thanks to Julianne, our group had a hanging basket in the RHSV competition at the MIFGS this year. This is the second year in a row that we have prevailed upon her willingness to create, nurture and deliver a hanging basket containing such a beautiful example of how Australian native plants can be grown successfully

in this type of pot (or basket). We are already looking for a volunteer to tackle this for the 2015 MIFGS.



Cicada

I was surprised at the number of Cicadas appearing at my moth sheet. This one was particularly striking with the red lines on the body.

Australian Plants Society – Melton & Bacchus Marsh Inc.

Incorporated in Victoria: A0026204P

ABN: 68 053 689 781

APS Melton & Bacchus Marsh Committee 2013/14

President	Russell Wait	0428 388 211	
Vice President	Graeme Woods		
Secretary	Cathy Powers	5369 4302	email: apsmeltonbacchus@gmail.com
Treasurer	Norris McCarthy	5428 9320	
Committee:	Julianne Diwell, David Pye, Lucille McCarthy		
	Cathy Powers - Newsletter editor		

URL for relevant internet websites:

Website: www.runningpostman.org.au

APS Victoria website : <http://www.apsvic.org.au/>

ANPSA website: <http://anpsa.org.au>

All contributions to the newsletter are gratefully received. Please send a word document and photos to the group's Gmail address. If you have any questions, feel free to contact me by email, snail mail or phone.

MEETINGS: 4th Wednesday of the month except July and December (doors open at 7.30pm)

VENUE: Dunvegan Cottage, Willows Historic Park

Cnr Reserve Rd & Nixon St, **Melton** **Melways:** 337 C9