



Running Postman



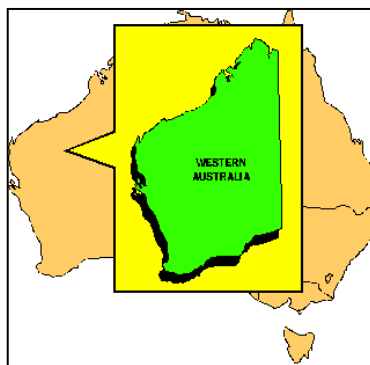
AUSTRALIAN PLANTS SOCIETY – MELTON & BACCHUS MARSH INC

JUNE MEETING

Overview by Cathy Powers

Western Australia occupies one third of Australia, is Australia's largest state and the second largest entity in the world. There are more than 100 National Parks and Marine Parks with countless State forest recreation sites covering an area of more than 20 million hectares.

This Australian state is renowned as having one of the most spectacular wildflower displays in the world. For about six months, over 12,000 plant species carpet the land with vivid beauty. Over 60% of the species are found nowhere else. There is plenty of opportunity to do self-drive wildflower tours but if you



Travels to the west of us



Petrophile linearis

want to take the stress out of the planning, sit back and relax then taking advantage of the tours conducted by Neil Macumber and Neil Marriot are a perfect way to see this part of the world. The real bonus is being able to learn about the common and not so common native flora from knowledgeable and experienced guides. It cannot get any better

than that. Neil offered some insight into what their tours involve so if you take advantage of the invitation to 'tour with the Neils' I suggest that you pack a good camera and take lots of notes.

Neil: Thank you – for coming to our meeting to detail the possibilities and show us that a trip to the West would be great fun!

Points to remember: Have a camera with a good macro setting. Take more than one picture of each subject – from different angles. Carry an extra battery or two and HAVE A GREAT TIME.

CALENDAR EVENTS

2014

27 August

There are some jobs best left to the experts but Warren Worboys (RBGC) will help us understand how to do those pruning jobs we can tackle.



Images from www.wikipedia

2014

September

SPRING PLANT DISPLAY

EXTRA EVENTS

**YOU WON'T KNOW
UNTIL YOU GO**

There are some very interesting up and coming events that may be of interest to you:

- **5 September** National Threatened Species Day
- **6 September** Fungi Photography Workshop, Melton Learning & Library Hub (email lindab@melton.vic.gov.au for registration)
- **6 September** APS Wilson Park Plant Sale, Wilson Botanic Park, Princes Highway, Berwick. 9 am to 4.00 pm
- **13&14 September** APS Yarra Yarra Native Plants Expo at Eltham Community & Reception Centre, 801 Main Road, Eltham. 10 am to 4.00 pm both days. Mel 21J6.
- **20&21 September** Bendigo Native Plants Group Flower Show.
- **4&5 October** APS Grampians Pomonal Flower Show, Pomonal Hall
- **18 October** APS Mitchell Plants Expo at Memorial Hall, Sydney Rd, Kilmore

➤ **18/19 October 2014**

FJC Rogers Seminar on Brachychiton and Associated Genera hosted by Bendigo Native Plants Group. Speakers include Trevor Blake who is fanatical about thomasiads; Dr Kerry Rathie, leader of ANPSA Brachychiton & Allied General Study Group; Rodger Elliot, Phil Hempel, Neil Marriott, Dr Gordon Guymmer, Director of Queensland Herbarium and Dr Carolyn Wilkins from WA Herbarium. **The registration form can be found on the APS Vic website.**

NOMENCLATURE

The dictionary says this means a set or system of names or terms, especially those used in a particular science or art (botany would be one of those).

What's in a name?

Cephalotaceae



World distribution: fairly extensive

This is a monogeneric family with one species - *Cephalotus follicularis* – which is a monotypic genus, meaning that it is the only species in its genus. The genus *Cephalotus* should not be confused with *Cephalotes* which is Neotropical genus of ant species.

The common name for this interesting carnivorous pitcher plant is the Albany pitcher plant. It is a small, low growing herbaceous species. The evergreen leaves appear from underground rhizomes and lie close to the ground forming the 'pitcher'. They develop a dark red colour in high light levels but stay green in shadier conditions.

These highly modified leaves act as pitfall traps for prey.

The larvae of *Badisis ambulans*, an ant-like wingless *micropezid* fly,

PITCHER PLANTS

develop inside the pitchers. This fly is a rare species found nowhere else in the world and has the common name of Albany Pitcher Plant Fly.



Image from www.aujardin.info

In the cooler months of winter, this plant has a natural dormancy period of 3 – 4 months, triggered by the temperature drop and reduced light.



Image from www.infocarnivores.com

The inflorescence is groupings of small, hermaphroditic, six-parted regular flowers which are creamy or whitish.

The habitat is on moist peaty sands found in swamps or along creeks and streams. It is classified as

Vulnerable.

DID YOU KNOW?

Getting BOGGED

I recently had the pleasure of visiting the Big Bog State Recreation area located in northern Minnesota, USA. It covers 38 square kilometres and is made up primarily of swamps, bogs and upland 'islands'.

Big Bog Recreation Area



Source: Minnesota Department of Natural Resources

According to the US EPA, a bog differs from other wetlands (swamps, fens & marshes) because it usually forms in the ancient glacial lake beds of northern climates. Bogs are also dominated by sphagnum peat, usually high in acid and low in oxygen. Peat piles up over thousands of years forming a spongy island 2 – 20 feet deep atop the water table.



Bog walkway

There is an artificial bog walk which allows visitors to explore 1.6km into the islands of spruce within the bog as well as the open wetlands. It is designed to allow up to 37% of natural sunlight to fall through which in turn allows the delicate

bog plants to grow under the walkway. Incidentally, there is a sign at the beginning of the walk urging visitors to remain on the walkway (aimed at foolish orchid photographers, I am sure). I mention this because there were orchids to be found but only one species close to the safer observation platform. I confess, I did step off and there was no bottom!!!! I returned to the platform very quickly but had provided a bit of entertainment for my sister who did not even throw me a lifeline.



Grass Pink Orchid

Calopogon tuberosus

This orchid was growing within arm's length to safe footing but the beautiful Showy Lady's Slipper orchid was about 15 metres so the photo was taken with my telephoto lens extended to the maximum (between branches of the tamarack and dark spruce). Interesting that the tamarack tree resembles other evergreens but is actually a deciduous conifer.



Cypripedium reginae

Luckily there were also many of the pitcher plants in flower.

Sarracenia purpurea – over the years many different names were given to different populations of this plant. Only two subspecies are generally recognized today and the *Sarracenia purpurea* subsp. *purpurea* is found to the north in areas that were recently glaciated.



Unlike our Australian pitcher plant, the flower of this species is single, large and unusual in appearance.



Worth a visit if you get to that area!

PHOTO GALLERY



Convolvulus arvensis (USA)



Convolvulus erubescens (Australia)



Campanula rotundifolia (USA)



Wahlenbergia luteola (Australia)



Synchlora aerata (USA)



Chlorocoma stereota (Australia)

October 22nd, 2014

AGM

ANNUAL GENERAL MEETING

The Annual General Meeting of our group will be held on the 22nd of October. Prior to that, nominations should be submitted for the positions which include President, Vice President, Secretary and Treasurer. We also need at least 3 additional members to form our committee. Please consider volunteering or nominating for a position this year.



CALENDAR OF EVENTS FOR 2014

- September – Spring Plant Table
- October – Inverleigh Flora & Fauna Reserve presented by Neil Anderton; this will be followed up by an excursion to the reserve (see below)
- November – Last meeting of the year and ideas/suggestions are welcome.

We are considering an excursion late October or early November to the Inverleigh Flora and Fauna Reserve. If you have date preferences, now is the time to make them known to the Secretary.



Membership Renewal

Membership fees are due 1 July, 2014 and if you have not renewed your membership, this is the last APS Melton & Bacchus Marsh group newsletter you will receive. If you are unsure, please make contact with our treasurer or secretary.



THANK YOU

Thank you to the Friends of Melton Botanic Gardens for watching over our Hakea plants. While I was away, David advised me that the COLD weather had played havoc with those plants we intended to sell at the Yarra Yarra Flower Show. I have yet to see the results of the plants being moved to warmer climates but the help offered by the FMBG members is a welcome helping hand.



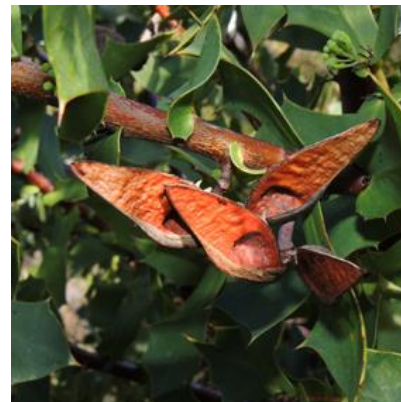
OUR WEBSITE:
www.runningpostman.org.au

Spring Plant display and discussion is the activity for our September meeting:

Our annual 'spring flower' spectacle is one of the highlights for the year. All members are invited to attend and bring along flowers/plants from the garden. Unlike the plant table during other meetings, all plants will be discussed and the owner of the plant might like to offer some insight as to why he/she has had such a success growing the plant.

Please make sure that the specimens are labelled (if known) and let us know the conditions in which it grows so we can all learn from your experience.

It is a fairly relaxed social evening so if you are so inclined, bring along a friend or relative.



Foliage or seed capsules can be just as interesting as flowers.

QUOTE OF THE NEWSLETTER

The less you know, the more you think you know, because you don't know you don't know.

---Ray Stevens

Surprises in the Garden

Birds 4U

By Cathy Powers

I spent time washing windows and one thing was clear (pardon the pun), you can take pictures of garden inhabitants through clean glass. The New Holland Honeyeaters are taking advantage of the flowering plants in the area near the house and, with grevilleas as well as the hakeas in full flower, they are flitting in and out almost continuously. Of course, there is the usual territorial discussion and the occasional incursion by a wren or two but overall it is a delight.



The other surprise (not really) is that a Wallaby got into my garden while I was away and decided that some of my plants were its

favourite food. I no longer have any flowers and almost no leaves on my plant. 😞



Australian Plants Society – Melton & Bacchus Marsh Inc.

Incorporated in Victoria: A0026204P

ABN: 68 053 689 781

APS Melton & Bacchus Marsh Committee 2013/14

President	Russell Wait	0428 388 211	
Vice President	Graeme Woods		
Secretary	Cathy Powers	5369 4302	email: apsmeltonbacchus@gmail.com
Treasurer	Norris McCarthy	5428 9320	
Committee:	Julianne Diwell, David Pye, Lucille McCarthy		
	Cathy Powers – Newsletter editor		

URL for relevant internet websites:

Website: www.runningpostman.org.au

APS Victoria website : <http://www.apsvic.org.au/>

ANPSA website: <http://anpsa.org.au>

All contributions to the newsletter are gratefully received. Please send a word document and photos to the group's Gmail address. If you have any questions, feel free to contact me by email, snail mail or phone.

Postal Address:

P.O. Box 946

Bacchus Marsh, Victoria 3340

MEETINGS: 4th Wednesday of the month except July and December (doors open at 7.30pm)

VENUE: Dunvegan Cottage, Willows Historic Park

Cnr Reserve Rd & Nixon St, **Melton Melways:** 337 C9